

# PWCS HalfSheet

A Publication of the PHILADELPHIA WATER COLOR SOCIETY

FOUNDED 1900

Cheryl Schlenker, President

Marie Bialek, Editor

## President's Message

"No matter how much falls on us, we keep plowing ahead. That's the only way to keep the roads clear." (Greg Kincaid) I know you've already heard way too many comments about this past winter.



However, this quotation spoke to me about another issue: the discipline of regular practice. "Plowing ahead," even when it is inconvenient, is what tends to bring the most rewards. A few New Year's Eves ago, I vowed to practice drawing a little every day. Although I have not followed this resolution daily, I am made aware that practice may not make us perfect, but it *will* make us better. My mother-in-law once told me that you can accomplish anything if you just work at it for 15 minutes a day. She may have been referring to weeding my garden, but I think it applies to any skill.

So this spring I have signed up for a figure drawing class in hopes that I will improve not only my drawing skills but also my self-discipline. Some clever person noted that "the used key is always bright." So I'm hoping to brighten my keys and keep plowing ahead. Perhaps you might consider the rewards of regular practice, and let me know how that works for you.

I hope you have gotten to see this year's Members' Show at Widener University! Co-Chairs Donald Leong and Wendy McClatchy, working with Widener's collections manager Rebecca Warda, deserve much credit for organizing such a wonderfully diverse show. The juror, Kass Morin Freeman, was much impressed, saying that

there were many "stunners" and she explains her selections in an article on page 3.

If you have ever considered working on the PWCS Board of Directors, here is another incentive: we are often invited to participate in exhibits and events. The Barnes Foundation Garden (in the old Merion Museum site) has asked us to take part in their new Family Flower Day activity by providing a group of plein air artists for everyone's entertainment. Should be fun!

Speaking of fun, keep in mind Paul Klee once said: "A line is a dot that went for a walk."

## PWCS Board at the Barnes Foundation

Members of the PWCS Board are invited to the Barnes Foundation in Merion, PA, for a plein air event on June 1st. The plein air activities are to showcase how different artists see the same subjects each from their own perspective and how handling of medium varies from person to person. Due to the limited space and parking, this invitation was extended to PWCS Board Members only.

The day is a combination of various educational activities involving art from different aspects, including some hands on activities for children and parents. The Foundation encourages Member Families to bring picnic lunches and make it a fun and educational event for everyone.

The Barnes Foundation is seeking to add this as part of their annual activities for their Member Families.

## Paint Out

Come join in on the fun at the PWCS 2014 Paint Out at Kirkwood Preserve, Willistown Township, Malvern, on May 31. Sweeping views of rolling hills, streams, woods, and paths will inspire us all. We are honored to have Bill Ternay start the day off with a plein air demo at 10:00 AM. Directions and details to follow on the PWCS website.

## Behind the Scenes of the Members' Show

During this year's Members' Show, I had the pleasure of being at the delivery day, which is always a treat. Talking to the artists and learning about their processes never ceases to inspire. This year Widener University Gallery is providing a wonderful venue even though the parking situation did prove to be a challenge. Rebecca Warda, the collections manager and person in charge was extremely gracious and accommodating. We had 73 works selected with a range of mediums that included watercolor, acrylic, pastel, pencil, tempera resist, and mixed media. Spending time with the juror, Kass Morin Freeman, was a wonderful learning experience. She shared her feelings that the heart or emotional quality of a painting is the most important facet for her. Choosing among such diverse mediums was a challenge that she was able to handle by creating 6 extra awards (Honorable Mentions.) She actually donated her honorarium to fund these extra awards, because she claimed it would take her all night to choose which paintings to exclude.

Rebecca Warda was charged with the job of arranging and hanging the paintings, and she did an admirable job. I asked her if she had a formula for making the exhibit look cohesive and exciting while getting the paintings aligned evenly. She says she simply does it by eye! This really speaks to my own heart, I hate measuring. So when I went back the next day when she had arranged the show I was gratified to see what a fabulous job she had done.

Co-Chairs Donald Leong and Wendy McClatchy worked hard together with Rebecca to handle the many details of a show of this stature. We are grateful to Widener for

taking care of many of them; they provided and attached labels, printed and mailed the postcards, supplied food for the reception, and as stated before, actually hung the show. Jane James designed the postcard and printed the awards, and Terry Boyle handled the publicity.

By the way, our next Members' Show in 2015 will be completely online! This may or may not be good news for you. Please consider the positives: no carting paintings to and from, no need to reserve a painting that may be needed physically for another show, no need to drive anywhere, and you can let all your friends see the show from the convenience of their computers. I look forward to seeing all your entries!

*Cheryl Schlenker*

## PWCS Awards List for 2014 Members' Show

Congratulations to the following artists! Awards were selected by Kass Morin Freeman, AWS, NWS. The artists were honored during the awards reception at Widener University Art Gallery on April 5<sup>th</sup>.

**Best of Show: (\$300)** Diane Cannon, *The Bend*

**2<sup>nd</sup> Place: (\$200)** Donald Patterson, *Looking Upstream*

**3<sup>rd</sup> Place: (\$100)** Mary Blackey, *Force in Passage*

**Honorable Mentions: (\$50)**

1<sup>st</sup>: Cheryl Schlenker, *Into the Wild*

2<sup>nd</sup>: Denny Bond, *Twisted*

3<sup>rd</sup>: Betty Lawler, *Summer Day Along the Maurice River*

4<sup>th</sup>: Michael Bignell, *City Sights*

5<sup>th</sup>: Madeleine Kelly, *Before the Fall*

6<sup>th</sup>: Theresa De Seve, *Brothers*

**Merchandise Awards: (Dynasty Brushes, Winsor Newton paint set)**

1<sup>st</sup>: Gloria Kasper, *Wissahickon Waterfall*

2<sup>nd</sup>: Emily Nicholson, *Paupac Inlet in October*

## Members' Show, 2014 Juror's Comments

Our Members' Show juror, Kass Morin Freeman, AWS, NWS, had a very difficult time selecting the award winners. Such a diverse array of mediums made it seem like judging fine apples against juicy oranges. To give credit to all the works she felt worthy of merit, she created the 6 Honorable Mention awards. Freeman actually donated her honorarium to cover the monetary value of these awards. PWCS is very grateful for the time and effort this juror put forth for the benefit of this exhibition. Here are the comments thoughtfully given about the winners:

### **The Bend, Diane Cannon**



### **First Place, Best in Show: Diane Cannon**

*The artist's personal vision coupled with an inspired way of working, which demonstrates excellent mastery of technique and superb composition connects with the viewer. The juror was first drawn to this painting and then kept coming back to it again and again.*

### **Second Place: Donald Patterson**



*At first sight, this painting seems an ordinary moment in time. A quiet moment. But as the juror dwelled there in that space and time, she was carried along throughout with what she felt was perfect placement of the spaces of light and dark.*

### **Third Place: Mary Blackey**

*The artist has made these shapes her own personal calligraphy, which represents what the human form entails.*

### **Honorable Mention and Merchandise Awards**

*It was difficult to put the other awards in order. In some, the heart of the matter of what they were painting carried the juror. In others, the great use of technique, medium, and composition were impressive.*



Kass Morin Freeman makes her selections at the PWCS Annual Members' Show

## PWCS Members Acceptances to the AWS Annual Show

Denise Athamas, AWS  
Nancy Barch, AWS  
Denny Bond, AWS  
David Coolidge, AWS  
Jeanne Dobie, AWS  
Sy Ellens, AWS  
Antonio Masi, AWS  
Laurin McCracken, AWS  
James McFarlane, AWS  
Janet Milnazik  
Nanette Noone, AWS  
Catherine O'Neill, AWS  
Carole Pickle, AWS  
Natalie Smythe, AWS  
Siv Spurgeon  
Frank Webb, AWS  
Susan Weintraub

Selected images of AWS paintings by PWCS members appear on pages 4 to 7.

Sarah Yeoman (former PWCS Board Member)



Janet Milnazik



Nanette Noone (former PWCS Board Member)



**Denny Bond**



**Siv Spurgeon (former PWCS Board President)**



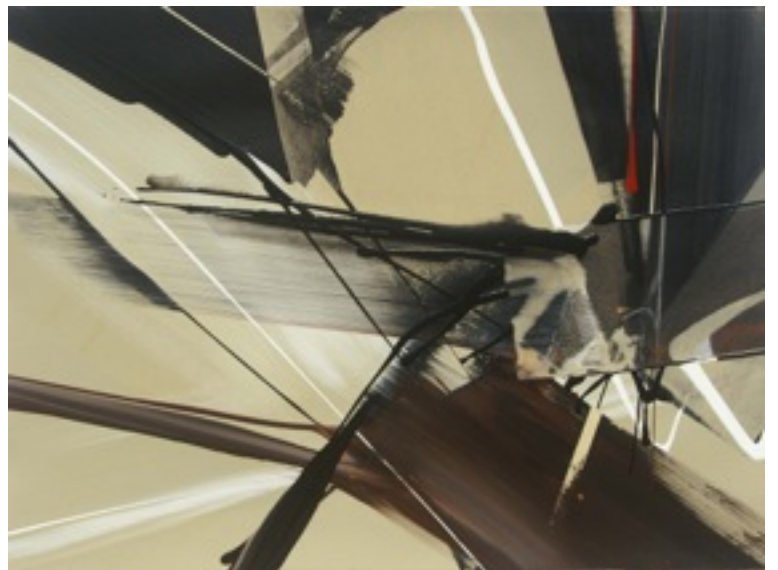
**Antonio Masi (PWCS Juror)**



**Sy Ellens**



**Carole Pickle (PWCS Juror)**



## Member News (\*signature members)

### Judy Ballance\*

- Drawing accepted in North Light Book's new publication, "Art Journey: People" to be published in December, 2014.

### Paulette Besignor\*

- *Besignor Sea Scapes*, Great Bay Gallery, 829 Bay Ave, Somers Point, NJ; July 19, 2014.  
Reception: Friday, June 27, 5-7pm.

### Michael Bignell\*

- Status changed from Associated Member to Elected Member in the Allied Artists of America.
- The Board of the American Artists Professional League elected Michael as a Fellow.
- Honorable Mention painting in the current "2014 Members Exhibition on Paper" at Widener University, PWCS.

### Diane Cannon\*

- *Ascending* is included in *The Best of Acrylic Painting*, released this February by North Light Books.

### Jeanne Dobie\*, NWS, TWSA, WHS, PWS, FWS, PWCS

- Awards Juror for the 2014 American Watercolor Society International Juried Annual Exhibition, NY.
- Award, Keystone State Medal and Award, Pennsylvania Watercolor Society's 34th International Juried Exhibition, PA.
- Awards Juror: Phillips Mill Exhibition, New Hope, PA, Sept to Oct, 2014.
- Florida Watercolor Society Exhibition, Sarasota, FL, Sept to Oct, 2014.
- Adirondack National Exhibition of American Watercolors, NY, August to October, 2014.

### Sandra L. Jones

- Medford Art Center, 18 N. Main St., Medford, NJ. May 7, 2014.
- Sussex County Arts and Heritage Council, 133 Spring St., Newton, NJ. May 17, 2014.
- Pine Shores Art Association, 94 Stafford Ave., Manahawkin, NJ. May 22 to 23, 2014.
- Annual Chairville School Art Show, Medford, NJ; March 1 to 14, 2014.

### Sandra L. Jones (continued)

- Willingboro Art Alliance Show, Smithville Mansion Annex Gallery, Eastampton, April 11, 2014.
- Creative Connections Show, Home Fine Art Gallery in Mt. Holly, NJ until March 30 2014.
- Philadelphia WC Society Members Show, Widener Univ. Art Gallery March 8-to May 17, 2014.
- Essex Watercolor Club Show at the Morristown Community Theatre Art Upstairs Gallery, Morristown; April 15 to June 3, 2014.
- St. Stephens Religious Show, 156 Warren St., Beverly, NJ; March 23 to 30, 2014.
- Artists Circle Show at the St. Luke Lutheran Church, 203 N. Valley Forge Rd, Devon, PA; April 4 to 6, 2014.
- Annual Historic Yellow Spring Art Show, at 1685 Art School Road, Chester Spring, PA; April 25 to May 11, 2014.

### James McFarlane (former PWCS Board President and Juror)



### **Madeleine Kelly\***

- Judge, New Hope Art League Annual Show.
- 1<sup>st</sup> Place, Bryn Mawr Pavilion Juried Art Show, *Contemporary Barn*
- 1<sup>st</sup> Place at the Jenkin's Arboretum Art Show "Inspired by Nature's Beauty", *Old Neighbors II*
- Honorable mention, PWCS Member's Show for *Before the Thaw*.

### **Patricia Hafer Reeder, PWS**

- Solo show, September 20th to November 6, 2014.
- 3rd place for *Windswept Dunes*, Annual Berks Art Alliance Show, Yocum Institute, Wyomissing, Reading, PA; February 16th to March 10th, 2014.

### **William Welch\***

- Art Show, Frangipani Gallery at 1102A Duval on Friday, March 7, 2014.

### **Idaherma Williams\***

- *Idaherma Joy in Watercolor*, a collection of 62 pages in full color of watercolors reviewed by Dr. Burt Wasserman on WWFM radio in December.
- "Orchids," NAWA, The Morris Museum Morristown NJ, March 20-June 15, 2014.

### **Sarah Yeoman\***

- Beauty and the Brush, Hardcastle Gallery, April 2014.
- Wilson Vineyard, April 2014.
- PA Watercolor Society online show, Honorable Mention for *Here and There*, April 2014.
- February Boldbrush competition, Outstanding watercolor award for *Totem*
- Tannery Pond Community Center, 4 women plein air show An Adirondack Perspective, July 2014, North Creek, NY

## **Save the Date!**

The 114<sup>th</sup> Anniversary Exhibition of Works on Paper is to be held at the Community Arts Center in Wallingford, and will run from September 15 to October 17. Entries are already coming in, both online and on CD. Our juror of selection will be Linda Baker, and our juror of awards will be Antonio Masi. The deadline for entries is June 14. You may enter or download a prospectus at [www.PWCSociety.org](http://www.PWCSociety.org)

**Congratulations to Nessa Grainger on achieving  
Honorary Life Membership!**

**In Memoriam: Oliver Grimley**

### **Nancy Barch (former PWCS Board Member and Juror)**



### **Frank Webb (PWCS Juror)**



*Philadelphia Water Color Society*

Cheryl Schlenker, President	610.891.1840
Donald Leong	610.269.7793
Jane McGovern, Vice President, Submissions Receive	610.565.6943
Dorothy Flanagan, Corresponding Secretary	610.565.6943
Dee Casner, Treasurer	610.566.0676
Deena Ball, Site Selection	610.789.1003
Mick McAndrews, Webmaster	610.518.6960
Terry Boyle, Publicity	484-681-4467
Mimi Barclay Johnson, Acting Recording Secretary	610-525-1443
Wendy McClatchy	610.353.1213
Katherine Lofaro Firpo, Education & Outreach	610.667.1033
Siv Spurgeon, Membership	610.544.1829
Marie Bialek, Half/Sheet Editor	215-688-6770

**General information** 215.569.3955  
**Email** PWCsociety@gmail.com  
**Website** [PWCsociety.org](http://PWCsociety.org)

Half/Sheet deadlines: March 16 for Spring issue; July 15 for Fall issue; November 15 for Winter issue

**Please send information to: Marie Bialek, Half/Sheet Editor: [marie.bialek@gmail.com](mailto:marie.bialek@gmail.com)**