

Philadelphia Water Color Society 2022 Member Exhibition

Juror Comments, Jessica L Bryant

Congratulations on a great show with a lot of really strong work! My philosophy as a juror is to aim to set aside personal bias and preference to focus on artistic merit, with an emphasis on composition, regardless of subject or style. Value and color support compositional design, which should serve the painting's subject, intent, and mood. There is a wonderful range of subjects and styles in this exhibit. It was a pleasure to get to know all the work and a challenge to make a final decision on the awards. Well done, everyone!

Awards

1st Place



Tim Saternow, *Walker and Cortland Alley*

This piece really stood out for its sophisticated and engaging use of composition, value, lost edges, and textures. It has an exceptional mood driven by a really interesting use of value contrasts and quieter, low contrast passages. The areas of low contrast invite a deeper exploration to discover subtle nuances in value and texture. Very nicely handled.

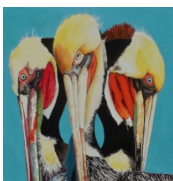
2nd Place



Nancy Barch, *Intertwined*

This piece is well composed, repeating and balancing shape, value, and color in interesting and varied ways. Repetition of color and value is well handled without being predictable. There is a lot of nuance in the textures to discover. I kept coming back to this piece, each time finding new aspects to engage with.

3rd Place



Barbara Handler, *California Brown Pelicans*

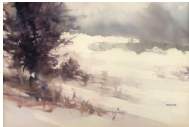
This painting offers a compelling narrative quality supported by a bold and well balanced composition and good use of negative space. The simple background offers effective contrast to the variety of textures in, and the color of, the subjects. The subjects are simply and beautifully handled, and the artist conveys a strong sense of their personality and individuality. The bold abstract design here is quite effective, and a nice counterpoint to the realism of the subject.



Merit Award

Carmella Tuliszewski, *Shadow Dance*

This piece demonstrates exceptional craftsmanship with a very clean application of the medium. The echos of color between the flowers and fabric offer balance and the reflected color in the vase is very well handled. There is a vivid aliveness to the play of light on the subject. Overall a very enjoyable painting that's beautifully executed.



Merit Award

Nishita Jain, *Winter's Hush*

The tonal subtlety here is highly effective, supporting the quiet mood of this piece. The gentle repetition of the primary dark value shapes keep the eye moving throughout. There is a confident, simplified application of paint that is just lovely – the brushstrokes hold remarkable variety and invite the viewer to slow down and really look with care.



Merit Award

Elise Morenon, *Tropical Dreams*

The figure here demonstrates good drawing skill and solid ability to simplify shapes and values while faithfully capturing the sense of the individual. The placement of the darker values of the feet offset the upper body beautifully, and the angle of the lower leg is a nice repetition of the angle from head to upper arm and knee. The division of negative space is interesting and well done, as is the simplified background.



Merit Award

Joanna Barnum, *The Artist's Book*

Both entries by this artist demonstrated an interesting sense of light and a great emotional quality in the subject. This piece is well balanced and has wonderful storytelling elements that invite the viewer's imagination. There is a strong sense of movement throughout, largely driven by the arrangement of the floral shapes. The contrast between the pinks/oranges and the greens provides terrific harmony in the choice of placement of these colors.



Merit Award

Barbara March, *Botanical Rhapsody*

The use of value, color, and texture here come together to make an interesting composition that invites deep exploration. Each small shape contains a unique value variation that keeps the eye engaged. Shapes and colors are echoed across the piece beautifully. There is a lot of movement and energy here, and a wonderful mood.

Honorable Mention



Betz Green, *Urban Lifestyle*

This piece is very well handled. Its strong, straightforward composition offers a solid framework for nuances of texture and color. The gentle handling of values creates a quiet mood that enhances the intrigue of the story.

Honorable Mention



Anne Van Blarcom Kurowski, *Beauty and the Breeze*

This artist entered two very strong portraits, both capture the life and character of the subject beautifully. In this piece, there is a wonderful variation in the use of the medium, creating a variety of textures that pull the viewer in. The lost edges within the shadows of the hair are really lovely and give great contrast to the looser handling of the background, hair strands, and shirt. The sense of movement, light, and life grow with each viewing.

Honorable Mention



Eveline Miller, *Solace in Nature*

This piece has a very strong mood supported by gorgeous use of subtle value and texture shifts within the foreground. The artist uses lost and found edges to offer a softness that feels true to the experience of the subject, weather, and time of day. A lovely, effective use of simplified shapes to convey the feeling of the experience.

Honorable Mention



Jim Green, *Beach Attire*

The figures in this scene have a wonderful quality to them. The drawing is simple, confident, and clean, demonstrating good drawing skill and control. The large value shapes are nicely distributed for a good sense of balance. The expressions of the figures are delightful and intriguing. Each time I view this piece I wonder about the story here, it keeps pulling me back.

Honorable Mention



Yvonne Mucci, *Winter Respite*

This piece has a good design with a strong, effective arrangement of value masses that keep the eye moving throughout. Every major shape has an echo, and there is a good color harmony. The medium is handled expressively, with a nice variety of edge qualities.